

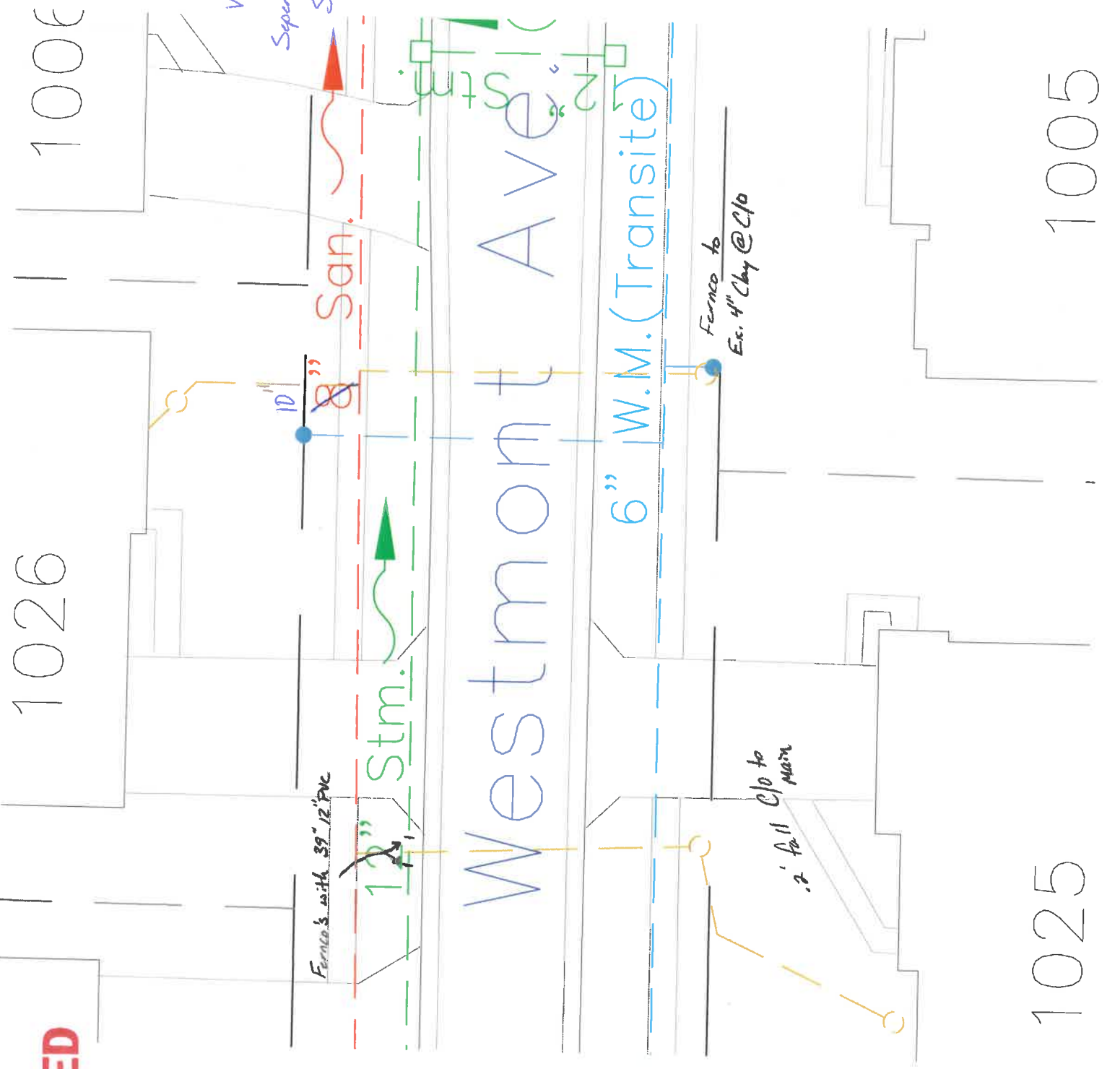
SCANNED

3-27-18 AD

1" = 20'

Vernon Nagel
Separate 1005 + 1025
Sanitary Taps
3-14-2018

A. Deblin



1006

1026

Westmont Ave.

6" W.M. (Transite)

San.

Stm.

Furnco's with 39" 12" PVC

Furnco to
Ex. 4" Clay @ C10

2' fall Clo to
main

1025

1005